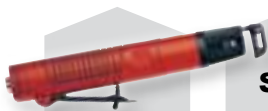


# Specialty Tools



*CP offers a wide range of specialty tools to match your daily air tool needs:*



**Saws**



**Shears**



**Riveters**

**High  
Speed  
Cutters**



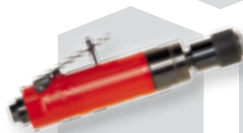
**Air  
files**



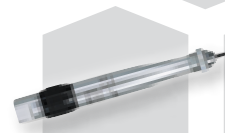
**Caulking  
guns**



**Nibblers**



**Tire  
Buffer**



**Engraving  
Pens**



**Chicago  
Pneumatic**

# Specialty Tools

## Riveting & Caulking

### CP9883



#### LIGHTWEIGHT & STRONG

##### FEATURES

- Air riveters for General Maintenance or Light-duty Production
- Compact size and composite body
- 3/16" (4.8mm) max. capacity
- Heavy pulling: up to 1,900 lbs (865 kg)
- Low vibrations and low noise level
- Includes: 3/32", 1/8", 5/32" and 3/16" (2.4, 3.2, 4 and 4.8 mm) nose pieces
- Jaw pusher for 2.4 & 3.2 mm rivets, jaws, syringe, service wrenches and oil bottle

##### BENEFITS

- Enlarge applications coverage
- Durable, reliable and easy to service
- Maximize operator comfort

### CP9884

Similar features as CP9883 for longer rivets capacity : 1/4" (6.4 mm)

##### BENEFITS

- Enlarge applications coverage
- Durable, reliable and easy to service
- Maximize operator comfort

### CP9882



#### EASY-TO-USE & RELIABLE

##### FEATURES

- Air riveter for General Maintenance
- Compact size
- 3/16" (4.8 mm) max. capacity
- For rivets in Aluminum, copper and softer materials
- Heavy pulling: up to 2,200 lbs (1,000 kg)
- Transparent container with holes for quick release of rivet ends
- Includes: nose pieces for rivets 3/32", 1/8", 5/32" and 3/16" (2.4, 3.2, 4 and 4.8 mm)

##### BENEFITS

- Simple construction for easy maintenance
- Great for trailer panels, number plates, and any type of panels maintenance



See accessories on page 139

### CP9885

Standard Cartridge

2" x 8-1/2" (50 x 210 mm)



#### AIR CAULKING GUN

##### FEATURES

- Standard caulking gun
- Trigger controlled material flow
- Accepts standard cartridges: 2" x 8-1/2" (50x210 mm)

##### BENEFITS

- Labor time saving
- Easy to handle
- Operator comfort
- Ideal for seal joints on wood, composite, glass or even rubber and plastic materials



CP9884

MODEL	PART NUMBER	MAX AXIAL PULLING LOAD		AIR CONS @LOAD		LENGTH		NET WEIGHT		VIBRATION LEVEL ISO 8662-12 (m/s²)		SOUND PRESS	SOUND POWER	AIR INLET
		lb@85psi	kg	cfm	l/s	in.	mm	lb	kg	a	k	ISO 15744 - dB(A)		in.
CP9882	894 109 8820	2,200	1,000	4.0	1.9	8.9	225	3.3	1.5	<2.5	-	62	73	1/4
CP9883	894 109 8830	1,900	865	4.5	2.1	11.8	300	3.2	1.4	<2.5	-	55	66	1/4
CP9884	894 109 8840	3,530	1,600	9.0	4.3	12.2	310	4.2	1.9	<2.5	-	56	67	1/4
CP9885	615 197 9885	-	-	16.8	8.0	10.1	270	2.3	1.0	<2.5	-	71	82	1/4

All models: Hose int. 3/8" (9.5mm) - @90 PSI (@6.3 Bar)



CP9160



ENGRAVING PEN

- FEATURES**
- Very quiet engraving pen with an integrated 7,9 ft (2 m) hose
  - High blows per minute (32.400 BPM)
- BENEFITS**
- Efficient engraving with low noise
  - Precise & reliable
  - Comfortable handling



CP9361



See accessories on page 139

MODEL	PART NUMBER	BLOWS PER MIN.	AIR CONS. @ LOAD		LENGTH		NET WEIGHT		VIBRATION LEVEL ISO 28927 (m/s <sup>2</sup> )		SOUND PRESS.	SOUND POWER.	HOSE INT.		AIR INLET
			cfm	l/s	in.	mm	lb	kg	a	K			in.	mm	
CP9160	615 197 9160	32,400	1.6	0.8	5.8	147	0.2	0.1	8.1	1.9	59	70	1/4	6	1/4
CP9361	T012644	13,500	0.2	0.1	5.0	127	0.3	0.1	5.1	2.4	79	90	3/16	5	1/4
CP9361-1 Kit	T011970	13,500	0.2	0.1	5.0	127	0.3	0.1	5.1	2.4	79	90	3/16	5	1/4

CP9160: Hose int. 1/4" (6mm) - CP9361 Hose int. 3/16" (5mm) - @90 PSI (@6.3 Bar)

CP9361-1 Kit

AIR SCRIBE KIT



FEATURES

- Highest durability in the market
- Hose 8 ft (2.4m) length with air filter
- Convertible to a hammer or a light scaler

BENEFITS

- Long lasting due to Premium quality components
- Easy handling and Comfortable use
- Adjustable power for a variety of applications and materials such as: metals, plastics, ceramics, and glass



**CP9361**  
Same features as CP9361-1 Kit with the tool and the hose only



### CP7901



#### CP7901Kit

See details page 139



#### LOW VIBRATIONS

##### FEATURES

- Air reciprocating saw
- Very low vibrations
- 3/8" (10 mm) stroke length
- Great power and speed of 10,000 strokes per minute
- 360° swivel air inlet

##### BENEFITS

- Ergonomic design and comfortable easy handling
- Maximize operator comfort and productivity
- Premium tool for all cutting applications

### CP881



#### RUGGED SAW

##### FEATURES

- Air reciprocating saw
- Power and speed of 9,500 strokes per minute
- Rugged construction
- Adjustable guard guide
- Comfortable rubber grip
- Includes (1) 32T saw blade

##### BENEFITS

- Cut through material with ease
- Powerful and durable
- Ideal tool for General Maintenance

### CP7900



#### RUGGED SAW

##### FEATURES

- Air reciprocating saw
- Ergonomic design and robust housing handle
- Adjustable guard guide
- 3/8" (10 mm) stroke length
- Includes (1) each 18T, 28T, 32T replacement blades

##### BENEFITS

- Compact and lightweight for all general cutting
- Ideal tool for periodic usage



CP7900



See accessories on page 139

MODEL	PART NUMBER	STROKES PER MINUTE	STROKES		AIR CONS. @LOAD		NET WEIGHT		LENGTH		VIBRATION LEVEL ISO 28927 (m/s <sup>2</sup> )		SOUND PRESS.	SOUND POWER	AIR INLET
			in.	mm	cfm	l/s	lb	kg	in.	mm	a	K			
CP881	T023916	9,500	3/8	10	6.0	2.8	1.6	0.7	8.6	219	23.2	6.6	84	95	1/4
CP7901	894 107 9011	10,000	3/8	10	5.5	2.6	1.9	0.8	9.0	229	<2.5	-	78	89	1/4
CP7900	894 107 9000	10,000	3/8	10	5.5	2.6	1.3	0.6	8.5	216	19.6	5.2	82	93	1/4

All models: Hose int. 3/8" (9.5mm) - @90 PSI (@6.3 Bar)

## CP873



## CP873K

See details page 139



## LOW SPEED

## FEATURES

- Low speed tire buffer
- Adjustable speed control
- Quick change slip chuck
- Lock-off lever to prevent accidental start-up
- Rear exhaust

## BENEFITS

- Most popular tire buffer in the market
- Fast and easy change of buffing wheel
- Ideal for patchwork, roughing areas for recapping and cleaning tire moldings

## CP861



20,000 RPM



## DURABILITY &amp; POWER

## FEATURES

- Heavy-duty high speed cutter
- Rugged, energy efficient 0.5hp (370 W) motor
- Lightweight tool: 1.63 lbs (0.74kg)
- Square handle design for positive grip
- Lock-off lever to prevent accidental start-up

## BENEFITS

- Power, durability and productivity
- Excellent for cutting through composite, fiberglass, steel metal, bolts, clamps.



CP874

## CP874



22,000 RPM

## HIGH-SPEED CUTTING

## FEATURES

- High speed cutter
- Wheel diameter 2-7/8" (73 mm)
- Adjustable speed regulator
- Lock-off lever to prevent accidental start-up
- Rear exhaust

## BENEFITS

- Precise and safe control
- Ideal for cutting through composite, sheet metal, bolts, etc.



See accessories on page 139

MODEL	PART NUMBER	POWER		CHUCK / WHEEL SIZE		FREE SPEED	AIR CONS @LOAD		LENGTH		WEIGHT		VIBRATION LEVEL ISO 28927 (m/s <sup>2</sup> )		SOUND PRESS.	SOUND POWER	AIR INLET
		hp	W	in.	mm	rpm	cfm	l/s	in.	mm	lb	kg	a	K	ISO 15744 - dB(A)		in.
CP861	T022039	0.5	370	2-7/8	73	20,000	8.5	4.0	7.7	197	1.6	0.7	2.8	1.0	79	90	1/4
CP873	T025374	0.5	370	7/16 hex	11	2,800	13.0	6.1	8.2	210	2.2	1.0	<2.5	-	88	99	1/4
CP874	T025375	0.5	370	2-7/8	73	22,000	12.5	5.9	7.2	184	1.7	0.7	4.0	4.0	88	99	1/4

All models: Hose int. 3/8" (9.5mm) - @90 PSI (@6.3 Bar)

# Specialty Tools

## CP835



### GOOD CUTTING CONTROL

#### FEATURES

- Heavy-duty nibbler
- Rugged head and 1.77" diameter punch cuts steel up to .060" (16 gauges) and aluminum up to .102 (10 gauges)
- Easy access to punch and die for quick replacement
- Lock-off lever for low-speed starting
- 4 optional cutting positions

#### BENEFITS

- Easy to operate and control
- Perfect for accurate cutting and best for tight corners and circles
- Used for nibbling plastic, tin, aluminum and others metals

## CP785S



### RELIABLE & POWERFUL

#### FEATURES

- Heavy-duty pistol shear
- Powerful efficient 0.5 hp (370 W) motor to cut up to 18-gauge steel (1.1 mm - 0.04")
- Triple idler planetary gearing
- Ergonomic handle design

#### BENEFITS

- Smooth operation and extended life
- Operator comfort
- Reliable cutting performance
- Excellent tool for cutting square and angles in all types of aluminum, tin and steel

## CP9705



### CP9710

Similar features as CP9705 with lower strokes/min

### POWERFUL & PRECISE

#### FEATURES

- Air file 0.2" (5mm) stroke
- Lock-offlever to prevent accidental start-up
- 360° swivel air inlet
- Rubber handle grip
- Includes 4 types of file: flat, half round, round, triangular

#### BENEFITS

- Excellent tool for use in confined areas
- Ideal for precise work
- Deburring or sharpening sheet metal, iron or plastic



CP9710



See accessories on page 139

MODEL	PART NUMBER	STROKES PER MIN	AIR CONS @LOAD		LENGTH		WEIGHT		VIBRATION LEVEL ISO 28927 (m/s²)		SOUND PRESS.	SOUND POWER	AIR INLET
			cfm	l/s	in.	mm	lb	kg	a	K			
CP785S	T023200	2,400	15.5	7.3	8.2	229	2.5	0.8	3.2	3.0	84	95	1/4
CP835	T022550	2,750	17.0	8.0	7.5	216	2.2	0.5	5.4	3.0	86	97	1/4
CP9705	615 193 9705	12,000	6.0	2.8	8.0	204	1.2	0.5	5.0	3.0	73	84	1/4
CP9710	615 193 9710	8,000	6.0	2.8	9.8	250	1.3	0.5	5.0	3.0	63	74	1/4

All models: Hose int. 3/8" (9.5mm) - @90 PSI (@6.3 Bar)



## Spares & Accessories

### Kits

#### CP7901 Kit

Part No. 894 107 9010

Kit includes:

- (1) Heavy duty saw CP7901
- (5) Each 18T, 24T, 32T blades
- (1) Swivel inlet in a heavy duty case



#### CP873 Kit

Part No. T024362

Kit includes:

- (1) Tire buffer CP873
- (1) Whip hose and exhaust hose



## OPTIONAL ACCESSORIES

### SAW BLADES FOR CP7901



ACCESSORIES	PART NUMBER
18T Saw blades (5)	894 015 8775
24T Saw blades (5)	894 015 8776
32T Saw blades (5)	894 015 8777

### PUNCH FOR CP835

ACCESSORIES	PART NUMBER
Punch set	KF137310
Die	KF137273

### SAW BLADES FOR CP7900 & CP881



ACCESSORIES	PART NUMBER
18T Saw blades (5)	CA146719
24T Saw blades (5)	CA146720
32T Saw blades (5)	CA146721

### WHEELS FOR CP861 & CP874

ACCESSORIES	PART NUMBER
Package of 5 wheels (ø 2-7/8"x1/16"x3/8" - 73x1.6x9.52mm)	CA155312

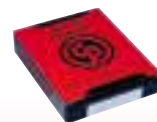


### SHANK FILE FOR CP9705 AND CP9710



ACCESSORIES	PART NUMBER
0.2" (5mm) Shank file rectangular (5)	205 051 9113
0.2" (5mm) Shank file round (5)	205 051 9123
0.2" (5mm) Shank file half round (5)	205 051 9133
0.2" (5mm) Shank file triangular (5)	205 051 9143

### TUNE-UP KIT



MODEL	TUNE-UP KIT
CP9882	894 016 9881
CP9160	205 050 6913